

# Tri-Sorb™ R

## High Efficiency

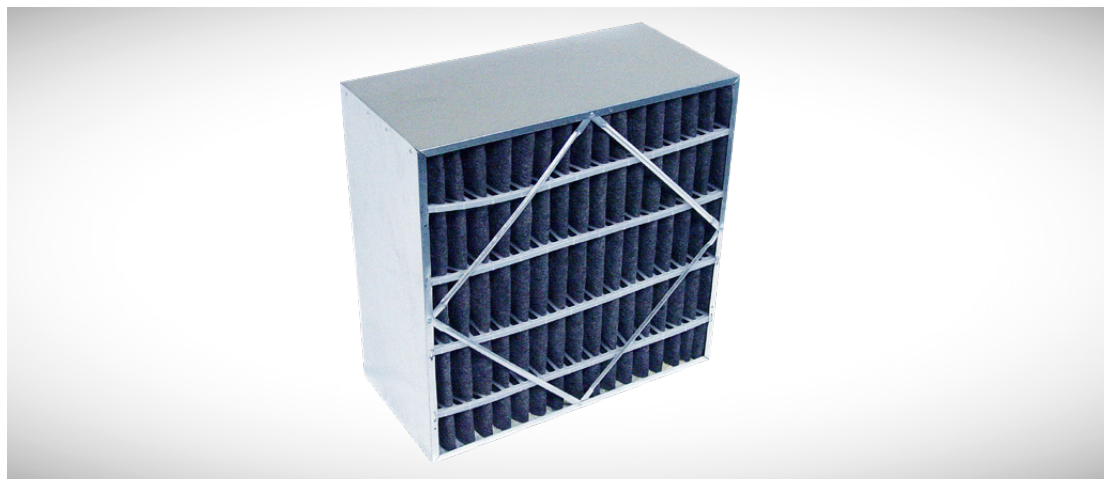
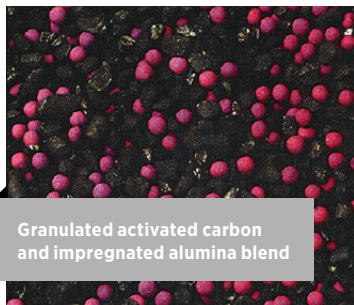
## Molecular Filtration

### FEATURES

- Easy retrofit
- Low static pressure
- Particulate and gaseous filtration
- Granular activated carbon
- Uniform carbon distribution
- Available with and without a header
- Available in 50/50 blend
- High first-pass efficiency
- Long service life
- Reduced shedding

### APPLICATIONS

- Commercial
- Healthcare
- Industrial plants
- Laboratories
- Institutional
- Governmental
- Microelectronics
- IAQ problems



### EXTENDED SURFACE SELF SUPPORTED RIGID BOX FILTER

Scientific studies show that Indoor Air Quality is among the Top 5 environmental problems in the world. Most people spend 90% of their time indoors and indoor air contains 2 to 5 times more harmful pollutants when compared to outdoor air. Synthetic materials and cleaning solutions can raise the level of indoor air pollutants to over 100 times outside levels – thus the need for Tri-Dim's Tri-Sorb R.

Tri-Sorb R offers both molecular and particulate filtration and offers easy retrofit into existing systems. Tri-Sorb R is offered in both a metal no header version and a metal single header version – this allows for easy interchange with current filters without the costly retrofit of HVAC system.

The Tri-Sorb R filter utilizes the CarbonWeb® media that allows for uniform distribution of the granular activated carbon. This combined with the high

activity of the carbon and the high carbon loading, 7 lbs (3.2 kg) per 24 x 24 x 12" (610 x 610 x 305 mm) filter, allows for unparalleled 'First Pass' efficiency on a broad spectrum of Airborne Molecular Contamination (AMC).

The extended surface of the Tri-Sorb R allows for a long service life and low resistance. Tri-Sorb R also features a low initial resistance – 0.43 "W.G. (107 Pa), which enhances the ability to easily retrofit with other filtration products. In addition, the low resistance leads to energy savings.

Tri-Sorb R is also available with a 50/50 blend of granular activated carbon and impregnated alumina. This blend offers a greater level of effectiveness across a very wide range of Airborne Molecular Contamination (AMC).

# Tri-Sorb™ R

## Technical Data

### NO HEADER VERSION

| Nominal Size                                 | Exact Size   | Media Area                                      | Initial Resistance    |                        | Carbon Weight       | Final Resistance      |
|--|--|---|-----------------------|------------------------|---------------------|-----------------------|
|  |  |   | 300 FPM               | 500 FPM                |                     |                       |
| <b>24 x 24 x 12"</b><br>(610 x 610 x 305 mm) | 23 <sup>3</sup> / <sub>8</sub> x 23 <sup>3</sup> / <sub>8</sub> x 11 <sup>1</sup> / <sub>2</sub> "<br>(594 x 594 x 292 mm) | 58.08 ft <sup>2</sup><br>(5.40 m <sup>2</sup> ) | 0.17 "W.G.<br>(42 Pa) | 0.43 "W.G.<br>(107 Pa) | 7.7 lbs<br>(3.5 kg) | 1.5 "W.G.<br>(373 Pa) |
| <b>20 x 24 x 12"</b><br>(508 x 610 x 305 mm) | 19 <sup>3</sup> / <sub>8</sub> x 23 <sup>3</sup> / <sub>8</sub> x 11 <sup>1</sup> / <sub>2</sub> "<br>(492 x 594 x 292 mm) | 47.83 ft <sup>2</sup><br>(4.44 m <sup>2</sup> ) | 0.17 "W.G.<br>(42 Pa) | 0.43 "W.G.<br>(107 Pa) | 6.2 lbs<br>(2.8 kg) | 1.5 "W.G.<br>(373 Pa) |
| <b>20 x 20 x 12"</b><br>(508 x 508 x 305 mm) | 19 <sup>3</sup> / <sub>8</sub> x 19 <sup>3</sup> / <sub>8</sub> x 11 <sup>1</sup> / <sub>2</sub> "<br>(492 x 492 x 292 mm) | 39.88 ft <sup>2</sup><br>(3.70 m <sup>2</sup> ) | 0.17 "W.G.<br>(42 Pa) | 0.43 "W.G.<br>(107 Pa) | 5.1 lbs<br>(2.3 kg) | 1.5 "W.G.<br>(373 Pa) |
| <b>12 x 24 x 12"</b><br>(305 x 610 x 305 mm) | 11 <sup>3</sup> / <sub>8</sub> x 23 <sup>3</sup> / <sub>8</sub> x 11 <sup>1</sup> / <sub>2</sub> "<br>(289 x 594 x 292 mm) | 28.70 ft <sup>2</sup><br>(2.67 m <sup>2</sup> ) | 0.17 "W.G.<br>(42 Pa) | 0.43 "W.G.<br>(107 Pa) | 3.8 lbs<br>(1.7 kg) | 1.5 "W.G.<br>(373 Pa) |

### SINGLE HEADER VERSION

| Nominal Size                                 | Exact Size   | Media Area                                      | Initial Resistance    |                        | Carbon Weight       | Final Resistance      |
|--|--|---|-----------------------|------------------------|---------------------|-----------------------|
|  |  |   | 300 FPM               | 500 FPM                |                     |                       |
| <b>24 x 24 x 12"</b><br>(610 x 610 x 305 mm) | 23 <sup>3</sup> / <sub>8</sub> x 23 <sup>3</sup> / <sub>8</sub> x 11 <sup>1</sup> / <sub>2</sub> "<br>(594 x 594 x 292 mm) | 55.66 ft <sup>2</sup><br>(5.17 m <sup>2</sup> ) | 0.17 "W.G.<br>(42 Pa) | 0.43 "W.G.<br>(107 Pa) | 7.4 lbs<br>(3.4 kg) | 1.5 "W.G.<br>(373 Pa) |
| <b>20 x 24 x 12"</b><br>(508 x 610 x 305 mm) | 19 <sup>3</sup> / <sub>8</sub> x 23 <sup>3</sup> / <sub>8</sub> x 11 <sup>1</sup> / <sub>2</sub> "<br>(492 x 594 x 292 mm) | 47.83 ft <sup>2</sup><br>(4.44 m <sup>2</sup> ) | 0.17 "W.G.<br>(42 Pa) | 0.43 "W.G.<br>(107 Pa) | 6.2 lbs<br>(2.8 kg) | 1.5 "W.G.<br>(373 Pa) |
| <b>20 x 20 x 12"</b><br>(508 x 508 x 305 mm) | 19 <sup>3</sup> / <sub>8</sub> x 19 <sup>3</sup> / <sub>8</sub> x 11 <sup>1</sup> / <sub>2</sub> "<br>(492 x 492 x 292 mm) | 39.86 ft <sup>2</sup><br>(3.70 m <sup>2</sup> ) | 0.17 "W.G.<br>(42 Pa) | 0.43 "W.G.<br>(107 Pa) | 5.1 lbs<br>(2.3 kg) | 1.5 "W.G.<br>(373 Pa) |
| <b>12 x 24 x 12"</b><br>(305 x 610 x 305 mm) | 11 <sup>3</sup> / <sub>8</sub> x 23 <sup>3</sup> / <sub>8</sub> x 11 <sup>1</sup> / <sub>2</sub> "<br>(289 x 594 x 292 mm) | 28.70 ft <sup>2</sup><br>(2.67 m <sup>2</sup> ) | 0.17 "W.G.<br>(42 Pa) | 0.43 "W.G.<br>(107 Pa) | 3.5 lbs<br>(1.6 kg) | 1.5 "W.G.<br>(373 Pa) |

### LOCAL REPRESENTATIVE

Tri-Dim Filter Corporation is committed to continual product development - all descriptions, specifications and performance data are subject to change without notice. Tri-Dim products are manufactured to exacting criteria - there can be a ±5% variance in filter performance.